

Belt Damage Detector Serie NSR66-BD3.

Robust die-cast aluminum enclosure.

KBT Europe product line..
Replacement for **Thermo**Ramsey DB-100 series.



Rugged Belt Damage Detector

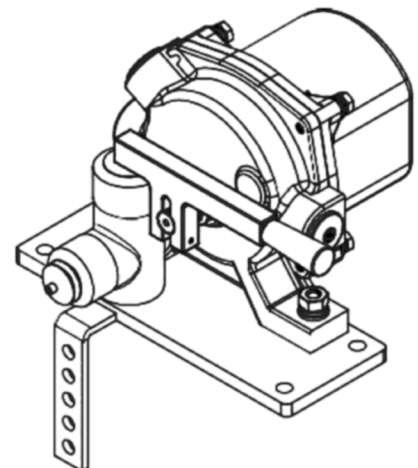
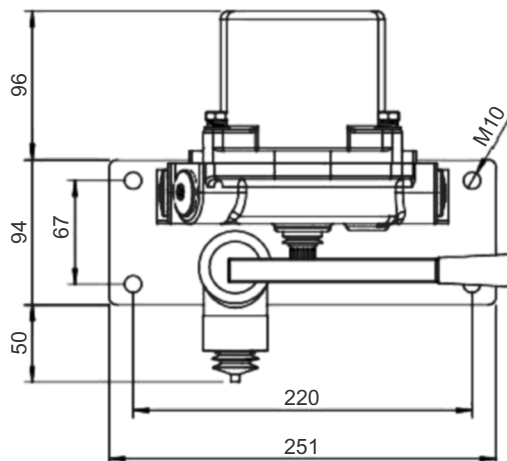
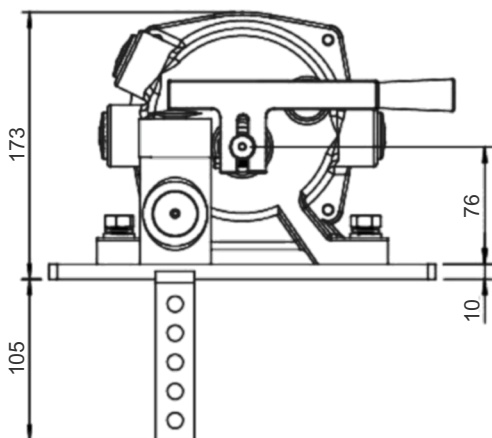
Our NSR66-BD3 series damaged belt detectors are conveyor belt safety devices that warn of belt damage or shut down the conveyor. Thanks to their robust design, they are suitable for a variety of industrial applications. Damaged belt detectors reduce downtime and maintenance costs, saving time.

The die-cast aluminium housing is robust and resistant. A damaged belt detector NSR66-BD3 is mounted on both sides of the conveyor, with their cables crossing below the belt.

If the belt is damaged, at least one cable will trigger the switch. The cable pulls the spring-loaded ball out of its mount and two microswitches are activated. One switch is used for alarm and the other for shutdown.

All micro switches are VDE approved. All products are manufactured according to CE and EAC standards. NSR66-BD3 series products do not require maintenance. All spare parts are available separately for easy repair.

Dimensions:



BELT DAMAGE DETECTOR NSR66-BD3



Technical Specifications

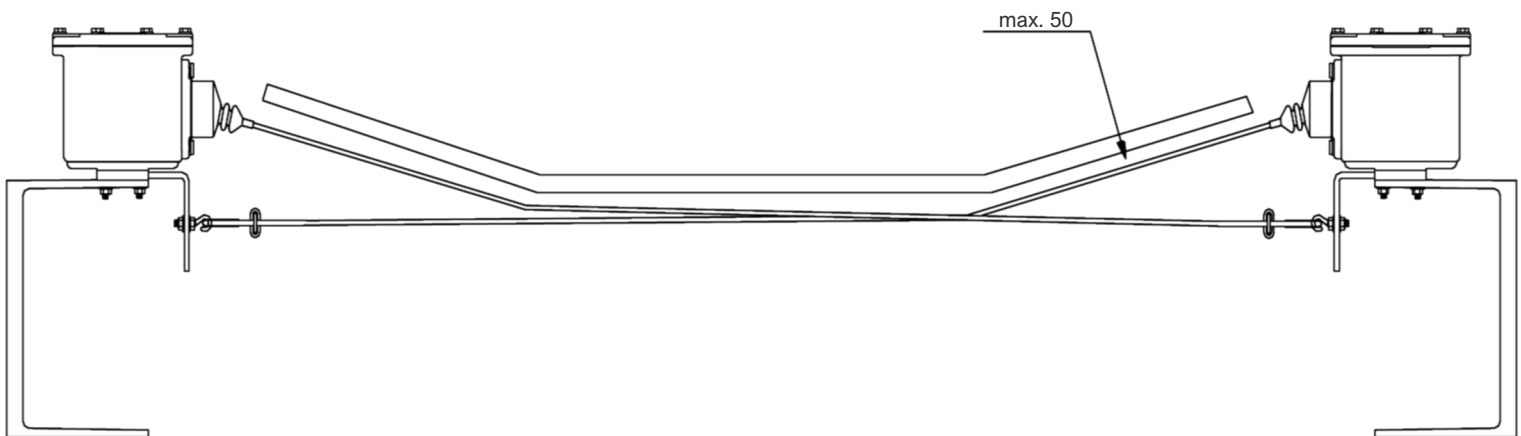
Housing material:	Die-cast aluminium, powder-coated
Housing colour:	Lemon yellow RAL 1012
Cable glands:	2 x M25
Operating temperature:	-45 °C ... +80 °C
Impact rating:	IK09 (EN 62262)
Protection:	IP 67
Outputs:	2 x 250 V AC 15 A; 24 V DC 30 A
Switching elements:	Micro switches, VDE approved
Optionen:	Individual switching angles; signal lamp; PROFIBUS® safety interface
Safety standards:	EN 60947; EN 60204; EN 60529; EN 62262
Certifications (standard):	CE; EAC
Certifications (optional):	ATEX Zone 21/22 II 2D Ex tb IIIC Db T85°C
Warranty:	2 years after delivery
Weight:	5.4 kg

Spare Parts List

Z-15GW22-B	1NO+1NC switch
122.R1.1242	M25x1.5 cable gland
122.R1.1241	M25 blind plug
166.MA1.1713	Mounting bracket
166.G1.1110	Enclosure
166.KL1.1712	Lever arm



Typical Mounting Arrangement



EmWeA Prozessmesstechnik e.K.
Günzerode Am Hagen 3
99735 Werther
Germany

Any question?

Phone: +49 36335 3800-0
Telefax: +49 36335 3800-10
info@emwea.de
www.emwea.de

© EmWeA Prozessmesstechnik e.K. • Subject to change without prior notice!