

Belt Misalignment Switch Series NSR66-BM.

Robust die-cast aluminum enclosure.

KBT Europe product line..

Replacement for **Thermo**Ramsey ROS-2E, and ROS-4E series.



Rugged Belt Misalignment Switch

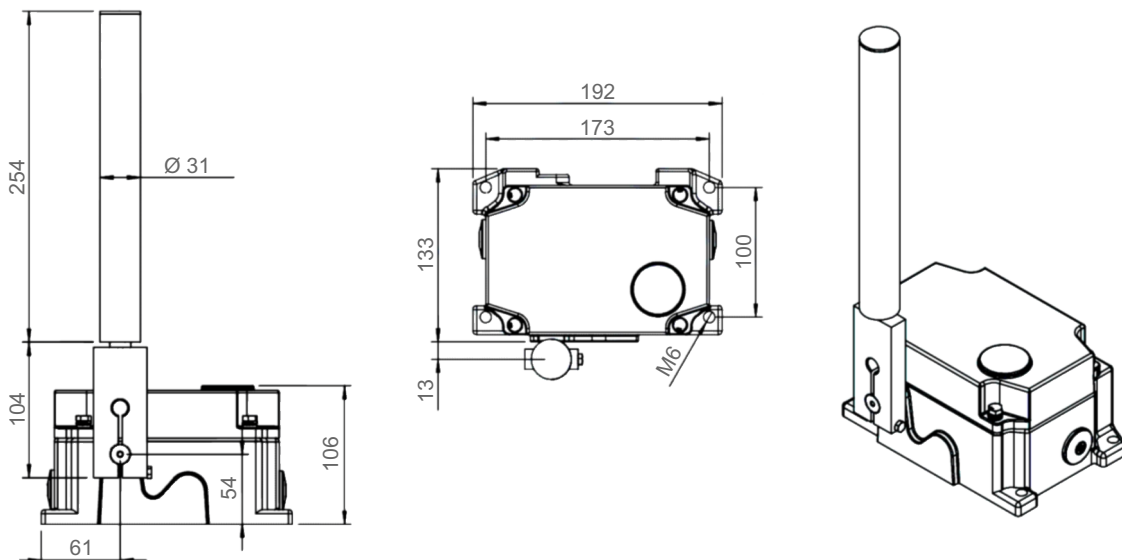
Our NSR66-BM series belt misalignment switches are conveyor safety devices that warn of belt misalignment or switch off the conveyor. Thanks to their robust design, they are suitable for a variety of industrial applications. Belt misalignment switches reduce downtime and maintenance costs, saving time.

The die-cast aluminium housing is robust and resistant. The roller arm has two bearings. Two NSR66-BM belt misalignment switches are mounted on either side of the conveyor. They prevent damage to the belt and equipment caused by belt misalignment.

The switch's roller arm is placed about 10 ... 15 mm away from the normal belt position. As the belt moves sideways, it touches the roller arm and it rotates. As soon as more force is applied to the roller arm, it moves away from the normal position and at 10° actuates the first Alarm microswitch. The first microswitch reports the alarm condition to the control system so corrective action can be taken. If the belt continues to move sideways, activating the second stop microswitch will stop the conveyor at the 20° position.

All micro switches are VDE approved. All products are manufactured according to CE and EAC standards. NSR66-BM series products do not require maintenance. All spare parts are available separately for easy repair.

Dimensions:



MISALIGNMENT SWITCH NSR66-BM

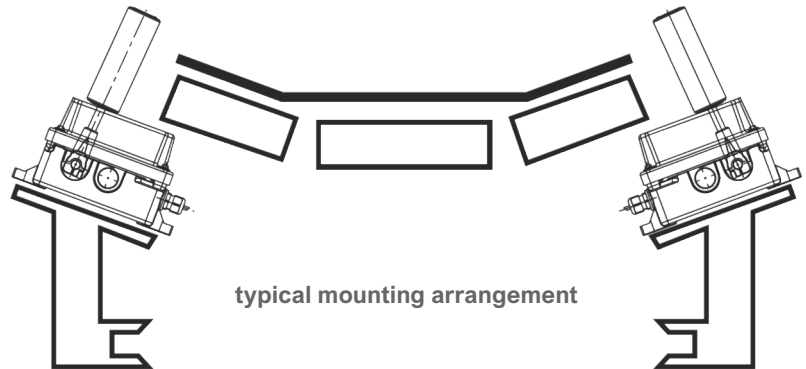


Technical Specifications

Housing material:	Die-cast aluminium, powder-coated
Housing colour:	Lemon yellow RAL 1012
Cable glands:	2 x M25
Roller dimensions:	254 x Ø 31 mm
Operating temperature:	-45 °C ... +80 °C
Impact rating:	IK09 (EN 62262)
Protection:	IP 67
Switching angle:	10° (Alarm), and 20° (Stop)
Outputs:	2 x 250 V AC 15 A; 24 V DC 10 A
Switching elements:	Micro switches, VDE approved
Options:	Individual switching angles; individual roller arm dimensions; PROFIBUS® safety interface
Safety standards:	EN 60947; EN 60204; EN 60529; EN 62262
Certifications (standard):	CE; EAC
Certifications (optional):	ATEX Zone 21/22 II 2D Ex tb IIIC Db T85°C
Warranty:	2 years after delivery
Weight:	4.3 kg

Spare Parts List

Z-15GW22-B	1NO+1NC switch
KB-R-01	M25x1.5 cable gland
122.R1.1241	M25 blind plug
KB-4-KN	4 pin connector
BA-33	Mounting bracket
166.G1.1110	Enclosure
166.KL1.1626	Roller arm



EmWeA Prozessmesstechnik e.K.
Günzerode Am Hagen 3
99735 Werther
Germany

Any question?

Phone: +49 36335 3800-0
Telefax: +49 36335 3800-10
info@emwea.de
www.emwea.de

© EmWeA Prozessmesstechnik e.K. ▪ Subject to change without prior notice!