

NIRLED ONLINE MOISTURE METER

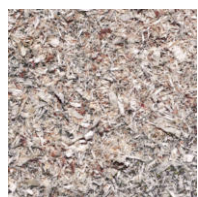
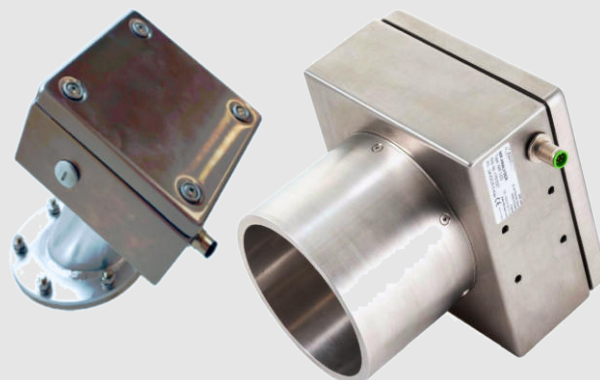


DATA SHEET

NIRLED Infrared Moisture Meter.

Online, continuous, contact-free.

Maintenance-free, no moving parts.



Moisture measurement



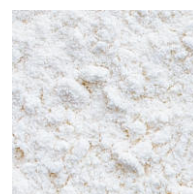
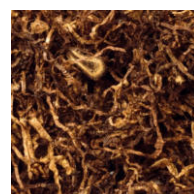
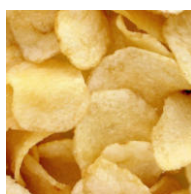
LED technology



no moving parts



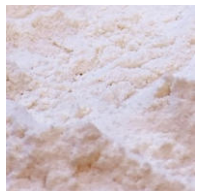
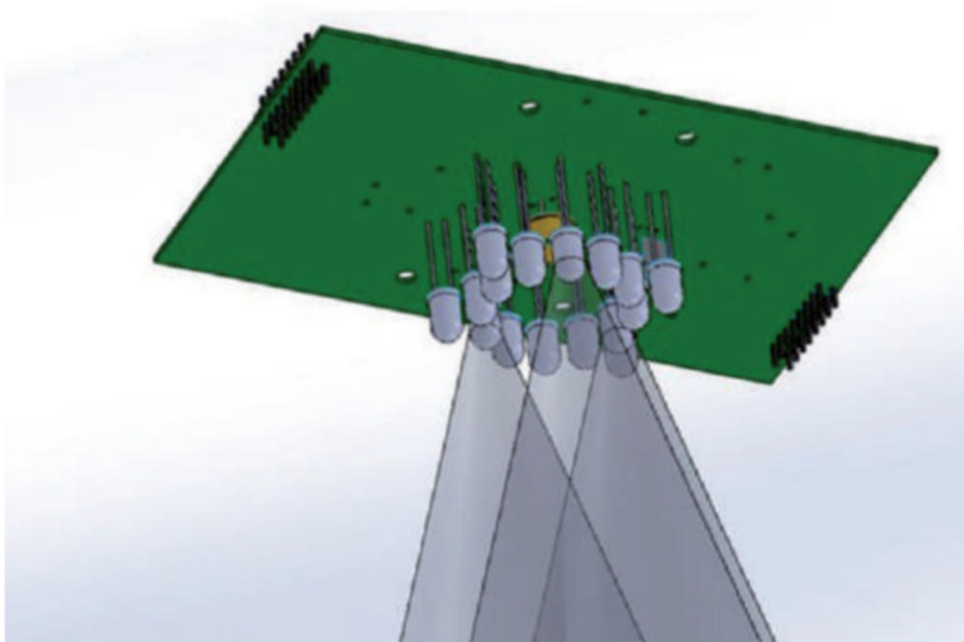
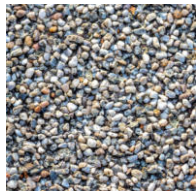
maintenance free



Measuring Principle

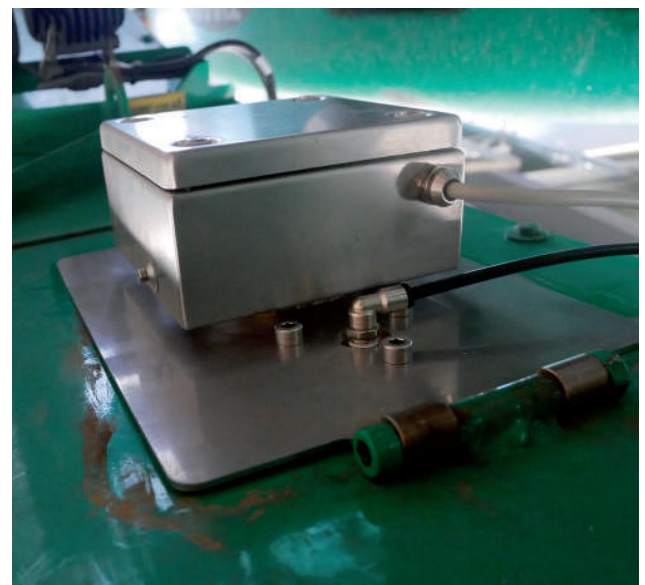
The device works on the principle of infrared absorption spectroscopy. The spectral signature of water is known. The NIRLED measures absorption at specific wavelengths to determine the moisture content of the bulk material.

An LED infrared source irradiates the sample with “useful” wavelengths. The reflected light is measured by a detector. By comparing the measured value with the stored laboratory calibration, the product moisture is determined precisely and continuously.



Advantages

- Non-contact online measurement.
- LED technology with a very long service life.
- Scavenging air connection for cleaning the optics.
- Stand-alone sensor – easy to install, configure and use.
- Low cost – very quick return on investment (less than a year in most cases).

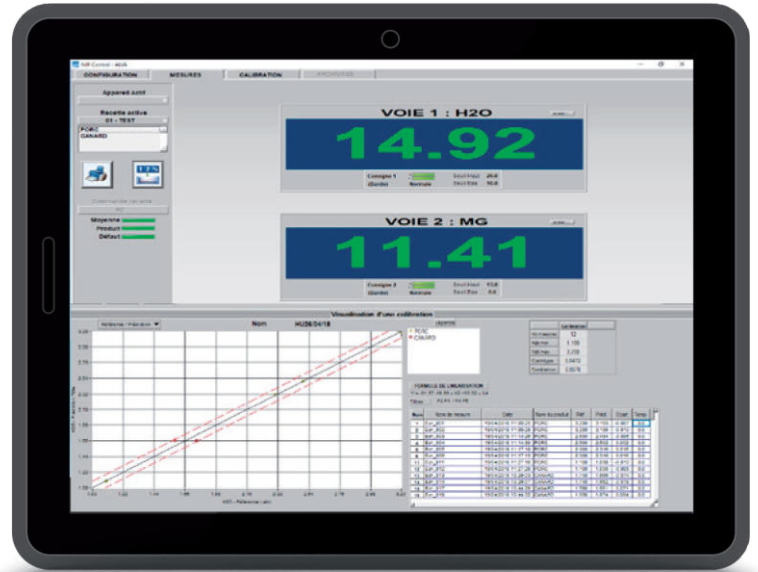


NIRcontrol Operating Software

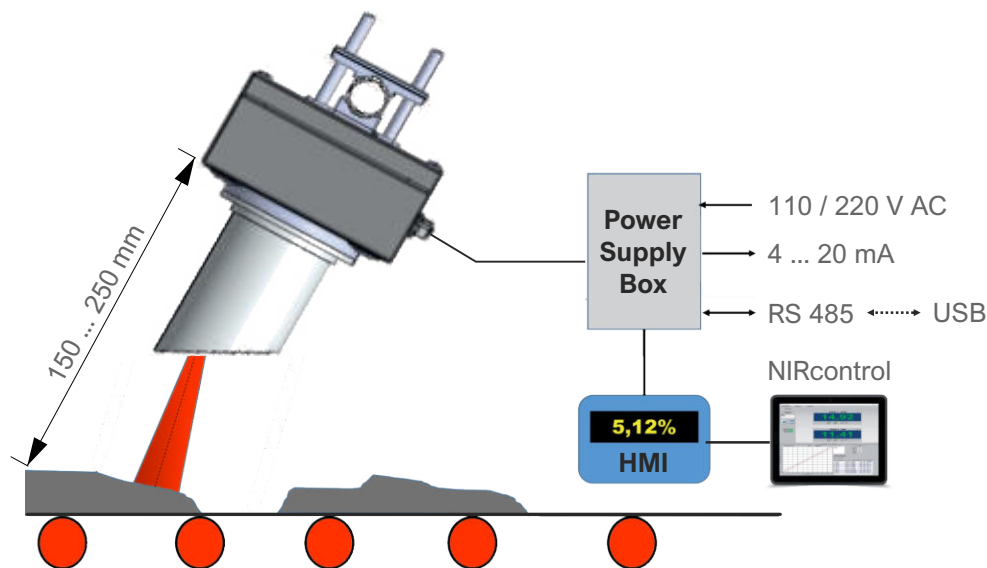
Every NIRLED system is delivered including the NIRcontrol software for Windows®:

- Commissioning the moisture meter.
- Simple calibration using sampling.
- Visualization of the measurement.
- Optional: archiving the measured values.

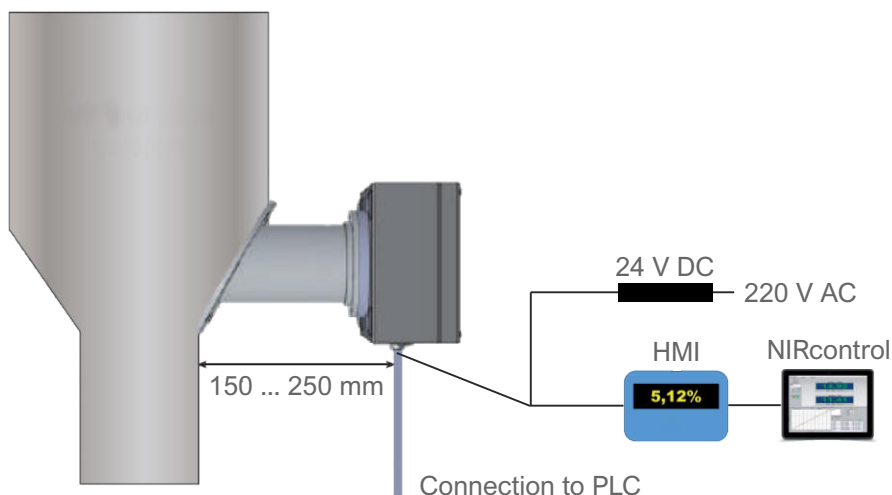
The device works completely autonomously, even without a connected PC.



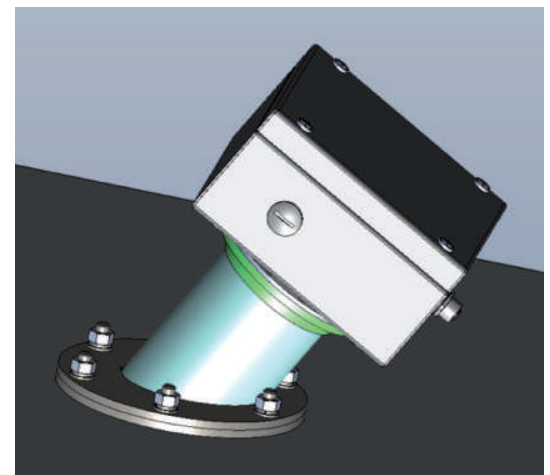
Conveyor Belt Application:



Silo Application:



Application Example:



NIRLED ONLINE MOISTURE METER

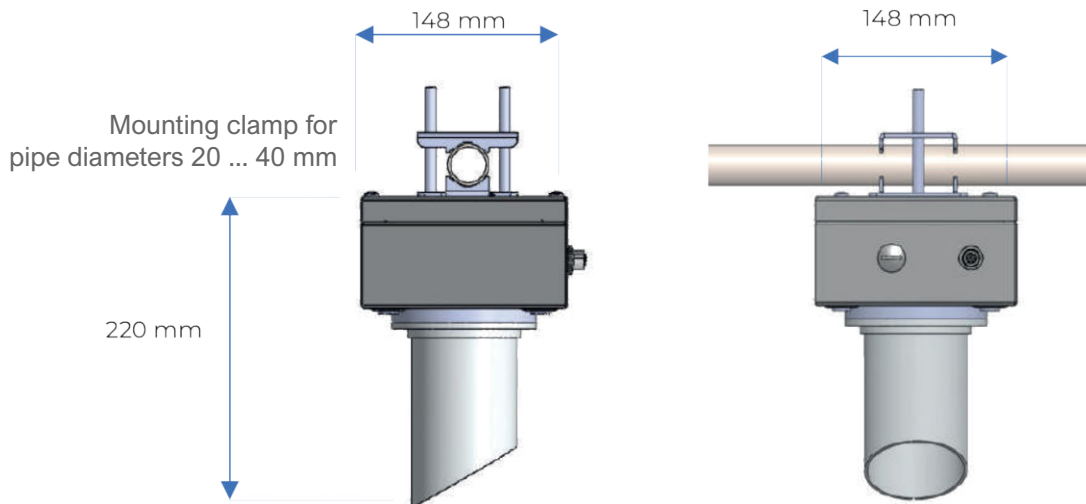


Technical Specifications:

Housing:	Stainless steel (1.5 kg)
Measurement of:	Moisture
Measuring range:	10% ... 60%
Measuring frequency:	40 Hz (40 measurements per second)
Measurement spot:	Ø 40 mm at 150 mm distance Ø 57 mm at 200 mm distance Ø 72 mm at 250 mm distance
Number of LEDs:	12
Supply voltage:	24 V DC $\pm 10\%$
Power consumption:	24 W
Ambient temperature:	50 °C (standard) 70 °C (with optional cooling)
Protection:	IP66
Analogue output:	4 ... 20 mA
Interface:	RS 485
Sensor cable:	5 m (standard)
Software:	NIRcontrol
Languages:	English, French



Easy Installation:



Accessories:



EmWeA Prozessmesstechnik e.K.
Am Hagen 3
99735 Werther
Germany

Any question?

Phone: +49 36335 3800-0

info@emwea.de
www.emwea.de

© EmWeA Prozessmesstechnik e.K. • Subject to change without prior notice!